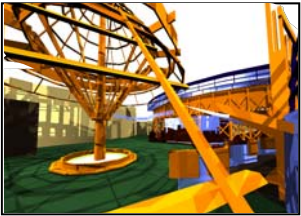
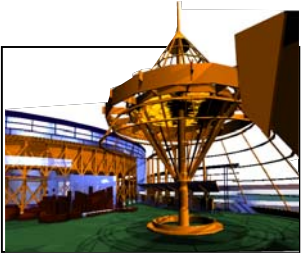
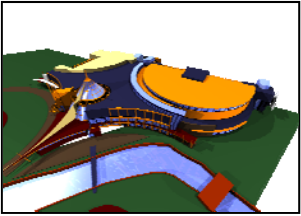
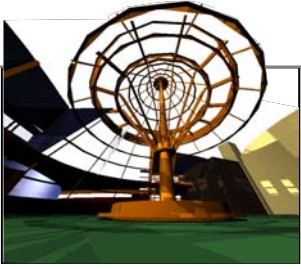


EPOH



EPOH developed the Master Plan and Land Use Planning for the buildings and attractions that are proposed for the Gateway Site in Sault Ste. Marie, known as 'Legacy Quest', undertaken by Magicorp.

Legacy Quest Tourism Development Sault Ste. Marie

| | |
|--------------|--|
| Consultant | .EPOH INC. ARCHITECTS AND CONSULTING ENGINEERS |
| Scope | Full Architectural and Planning Services |
| Project Type | planning and design |
| Project Size | 12 acres |
| Client | Magicorp |

The project strives to create a meaningful architecture that will contribute to the visitor experience, as well as become a significant icon for tourism in Sault Ste. Marie. The design concept establishes a relationship between Northern Ontario's cultural history, natural history, and architectural heritage. The building's superstructure takes its cues from historical elements such as the trestle bridge, heavy timber, wood construction, marine and nautical elements, and early native structures. The exterior and interior design incorporates indigenous materials and colours assembled into a thematic framework to support the project's programmatic elements. These include Immersion Studio's virtual attraction, to a dark ride, art exhibits, a relocated Algoma Central Railway Station, a cultural centre, aboriginal heritage centre, a major hotel, restaurants and shops.

