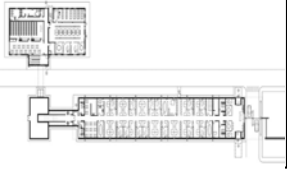


EPOH



The new Tenaris offices and facilities building added to the original structure which has been renovated for training rooms and archives.

Tenaris Algoma Tubes Administration Building

Sault Ste. Marie

Consultant	EPOH INC. ARCHITECTS AND CONSULTING ENGINEERS
Services	Full Architectural, Mechanical and Electrical Services
Project Type	Office Buildings
Project Size	2200 m ²
Client	Tenaris Algoma Tubes



In front of the huge (475 m.) industrial façade of the mill, completely closed by white metal panels, the office complex consists in three volumes connected with tunnel passages: a new all glass parallelepiped housing the offices and related facilities and services. In addition, a new all concrete technical building housing technical plants and a renovated concrete-blocks building to house training and engineering archives have been added to the structure.

The intention is to have the three absolutely stereo-metrical volumes interact having the continuous white of the mill façade as a kind of metaphysical backstage.

